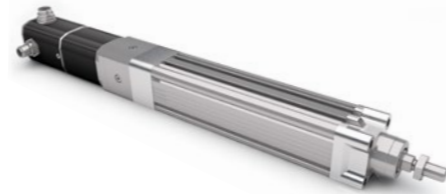


- » Electric cylinder with strokes up to 400 mm
- » With brushless DC servomotors
- » Lead and ball screw version
- » Twist protected thrust rod
- » In-line and parallel motor version
- » Alternative for pneumatic cylinder
- » Compact and space saving
- » Easy configuration of max. 14 positions (PI motor)
- » Several BUS interfaces available
- » PLG 42 on request

- » Elektrischer Hubzylinder mit Hube von bis zu 400 mm
- » Mit bürstenlosem DC-Servomotoren
- » Gleitspindel und Kugelrollspindel Versionen
- » Verdreh gesicherte Schubstange
- » In-Line und parallele Motorausführung
- » Alternative zu Pneumatik Zylinder
- » Kompakt und platzsparend
- » Einfache Konfiguration von bis zu 14 Positionen (PI Motor)
- » Verschiedene BUS-Schnittstellen verfügbar
- » Auf Anfrage mit PLG 42



IO mode

CANopen version available

Service interface

Force mode

Precise positioning

Maintenance free

High efficiency

Low noise

Self-locking ratios available

High force

High dynamic

Digital inputs

Digital outputs

Analog inputs

Feedback integrated

Oscilloscope software available

Condition monitoring

Programmable

Protection class (up to)

Supply voltage versions

Certification

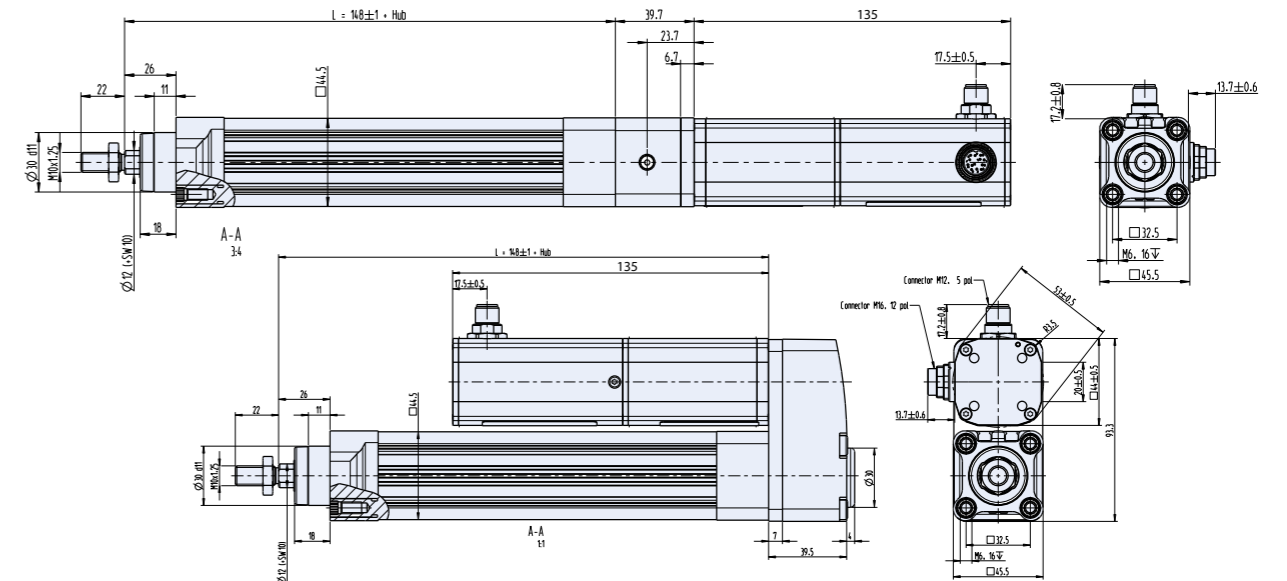
Certification

Vibration resistance

| Data/ Technische Daten                                    |                  | CASM-32                          |                |     |
|---|------------------|----------------------------------|----------------|-----|
| Motor type/<br>Motortyp                                   |                  | BG 45x30                         |                |     |
| Nominal voltage/<br>Nennspannung                          | VDC              | 24                               |                |     |
| Nominal current/<br>Nennstrom                             | A                | 4.9                              |                |     |
| Peak current (2 sec.)/<br>Spitzenstrom (2 sec.)           | A                | 15                               |                |     |
| Spindle version/<br>Spindelversion                        | -                | LS                               | BS             | BN  |
| Spindle pitch/<br>Spindelsteigung                         | mm               | 1.5                              | 3              | 10  |
| Constant force/<br>Dauerkraft                             | N                | 300                              | 327            | 131 |
| Peak force/<br>Spitzenkraft                               | N                | 300                              | 700            | 462 |
| Max. traverse speed/<br>Max. Verfahrensgeschwindigkeit    | mm/s             | 60                               | 150            | 500 |
| Max. acceleration/<br>Max. Beschleunigung                 | m/s <sup>2</sup> | 1                                | 6              |     |
| Repeatability/<br>Wiederholgenauigkeit                    | mm               | +/- 0.07                         | +/- 0.01       |     |
| Lifetime L <sub>10</sub> /<br>Lebensdauer L <sub>10</sub> | km               | 70                               | Siehe Diagramm |     |
| Stroke length/<br>Hublängen                               | mm               | 50 / 100 / 150 / 200 / 300 / 400 |                |     |

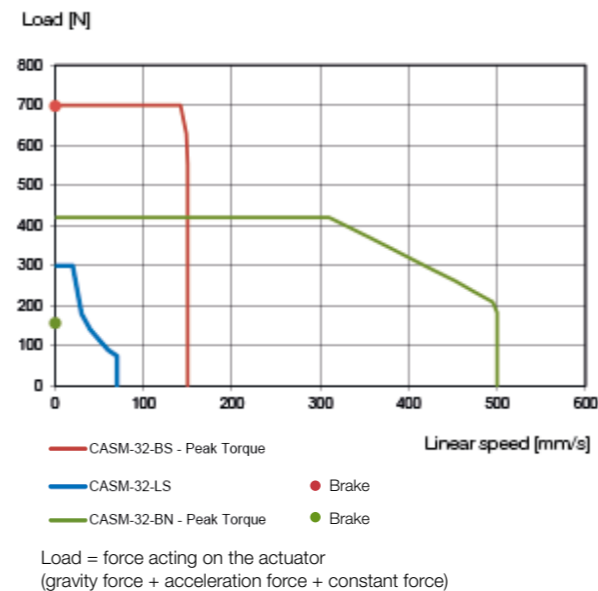
LS: Lead screw/ Gleitspindel *Not applicable for motions on mechanical stop./ Nicht geeignet für Bewegungen auf mechanischem Anschlag.*  
 BS / BN: Ball screw/ Kugelrollspindel

Dimensions/ Maßzeichnung

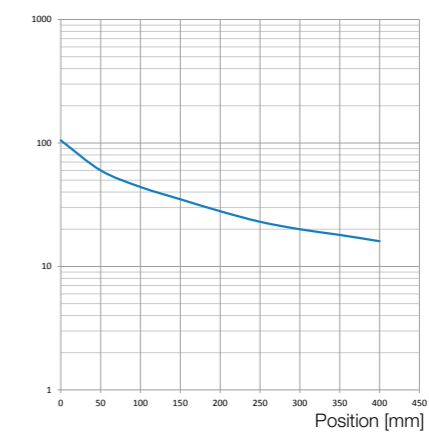


Characteristic diagram/ Belastungskennlinien @25°C

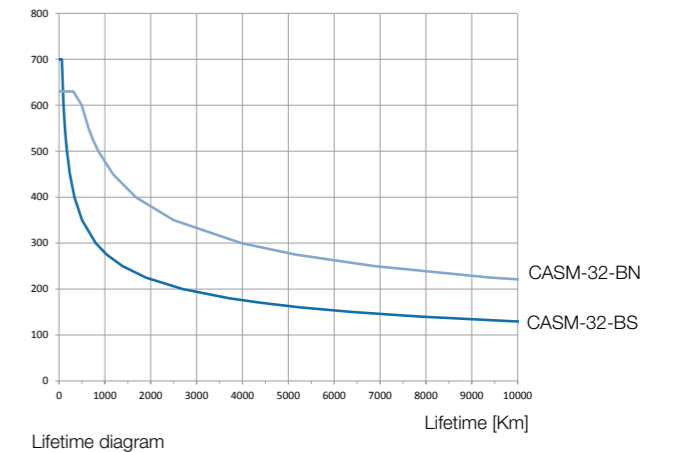
Load/ linear speed diagram



Shear load [N]



Shear load diagram  
The shear load acts at right angles to the movement direction.  
Nominal load [N]



Preferred series/ Vorzugsreihe Standard product/ Standardprodukt On request/ auf Anfrage See notes page 8/ Hinweise siehe S. 8


***Authorised, valued-added distributor***


Australia & New Zealand



**Powerbox Australia Pty Ltd**

Sydney Head Office  
4 Beaumont Road,  
Mt Kuring-Gai, NSW 2080  
Australia


 1800 251 380

 [sales@powerbox.com.au](mailto:sales@powerbox.com.au)

 [powerbox.com.au](http://powerbox.com.au)

**Powerbox Pacific Ltd**

New Zealand Sales Office  
1a Henry Rose Place,  
Albany, Auckland  
New Zealand 0632

 09 4158 320

 [sales@powerbox.co.nz](mailto:sales@powerbox.co.nz)

 [powerbox.co.nz](http://powerbox.co.nz)