



# SMU01L

## Smart Monitoring Unit

### PRODUCT DESCRIPTION

SMU01L is an intelligent controller suitable for use with Enetek's range of telecom rectifiers. It is equipped with a 2.8" LCD display. The simple yet effective controller unit offers a complete power system management function including data acquisition and processing, battery management as well as monitoring and control of the system solution.

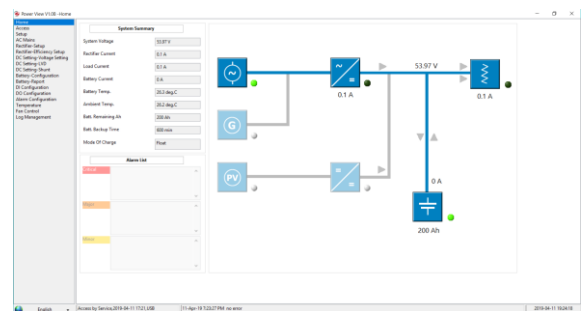
The user-friendly SMU01L controller, coupled with its compact size and easy-to-use interface, is highly adaptable and can be incorporated into small design spaces.

### KEY FEATURES

- Control and management for rectifier modules and peripheral devices
- Alarm/Data logging @ > 10,000 records
- Multiple language options
- Intelligent energy saving management
- Comprehensive battery management including mid-point monitoring, temperature compensation and capacity testing
- Multiple LVD controls
- Fast charge control with timer
- Site information management
- 2.8" LCD display with 6 keys for menu navigation
- RS485/USB for remote connection to GUI
- Web-based configuration
- TCP/IP and SNMP interface for remote monitoring
- 1 x SD slot
- 1 x wireless GSM interface slot (Optional)

### OPTIONAL FEATURES

- AC parameters monitoring module (voltage, current frequency)
- 24-point battery monitoring module c/w 2 x temperature sensor
- Extended DC monitoring module (2 x voltage, 8 x current)
- Extended digital input/output module c/w fan management
- Expandable load/battery fuse sensing module



## TECHNICAL SPECIFICATIONS

MODEL		SMU01L
Compatibility	Enetek's range of rectifier solutions	
SPECIFICATIONS		
Input Voltage Range / Power	18Vdc to 60Vdc @ 27W	
Display	2.8" LCD	
User Interface	3 x LED, 6 x user buttons	
Communication Interface	USB, RS485, TCP/IP (Modbus), SNMP	
Operating Temperature Range	-40 to +75°C	
Storage Temperature Range	-40 to +85°C	
Relative Humidity	Operating: 0%-95% non-condensing; Storage: 0%-99% non-condensing	
MTBF	>300,000hrs (Ambient temp of 25°C)	
Weight	< 0.5kg	
Dimensions	Controller Unit: 108(W) x 220(D) x 43(H) mm	
	LCD Unit: 170(W) x 15(D) x 89(H) mm	
SYSTEM INTERFACE		
1 x Voltage sensing (expansion module available)	6 x Digital inputs (expansion module available)	
2 x Current sensing (expansion module available)	6 x Digital outputs (expansion module available)	
2 x Temperature sensing (expansion module available)	Battery mid-point measurement	
Up to 2 x LVD	Load/battery fuse monitoring	
SYSTEM FEATURES		
AC voltage measurement (via optional module)	User configurable alarms and settings	
Alarm grouping and alarm mapping	Auxiliary input and load monitoring	
Alarm Logs (> 10,000 events)	User profile configuration	
Data logs (> 10,000 logs)	Multi languages Option	
Site information and management	Up to 3 levels of password settings	
BATTERY FEATURES		
Battery temperature measurement	Low voltage disconnection	
Temperature compensated charging	High/low battery voltage	
Automatic float/boost charging	High/low battery temperature	
Automatic battery capacity test	Optional 24-point measurement	
RECTIFIER FEATURES		
Individual rectifier information	Efficiency management (intelligent energy management)	
Rectifier current, temperature and status monitoring	Remote control including voltage adjustment	
Active current sharing	Overload monitoring	
Power limit walk-in	Module position addressing	
CONTROL and MONITORING		
Local management through LCD, 3 x LED and 6 x user buttons	Full monitoring and control functions can be accessed locally through the use of the 6 user buttons.	
DESIGN STANDARDS (SAFETY)		
EN60950-1		
DESIGN STANDARDS (EMC)		
EN61000-6-4-2/-4/-5		
DESIGN STANDARDS (OTHERS)		
CE, RoHS compliant		

***Authorised, valued-added distributor***

Australia & New Zealand



**Powerbox Australia Pty Ltd**

Sydney Head Office  
4 Beaumont Road,  
Mt Kuring-Gai, NSW 2080  
Australia



1800 251 380



[sales@powerbox.com.au](mailto:sales@powerbox.com.au)



[powerbox.com.au](http://powerbox.com.au)

**Powerbox Pacific Ltd**

New Zealand Sales Office  
1a Henry Rose Place,  
Albany, Auckland  
New Zealand 0632



09 4158 320



[sales@powerbox.co.nz](mailto:sales@powerbox.co.nz)



[powerbox.co.nz](http://powerbox.co.nz)