

PBB6A Series

COSEL SINGLE/DUAL DC/DC CONVERTER

FEATURES

- 30W DC/DC Converter
- DIN rail mounting
- Screw Termination
- Single/Dual outputs
- Wide input voltage range
- Operating Temperature -20 to +70C
- High Efficiency
- Remote On/Off



SPECIFICATIONS

INPUT	
Input voltage	12/24Vdc (9 - 36V) 24/48Vdc (18 - 76V)
OUTPUT	
Output voltage	5Vdc (4.5 - 5.5V) 12Vdc (10.8 - 13.2V) 15Vdc (13.5 - 16.5V)
Output power	30W
Output current	See selection table
Remote On/Off	Provided (Negative logic L: ON, H: OFF) Connector CN4 has been installed jumper as factory setting. When remote ON/OFF is used, please remove the installed jumper
Line regulation	50mV Typcal
Load regulation	100mV
Ripple & Noise	150mVp-p
Start up time	30ms (min input, I _o =100%)
Efficiency	90% Typical
STANDARDS & APPROVALS	
Safety	UL60950-1, C-UL, EN60950-1 Complies

PROTECTION	
Overcurrent Protection	Works over 105% of rating - recovers automatically
Overvoltage Protection	Works over 120 to 160% of rating
Isolation	Input-Output: 1,500Vdc 1min Input- Ground: 1,000Vdc 1min Output-Ground: 1,000Vdc 1min
ENVIRONMENT	
Operating temperature	-20 to +75C
Cooling Method	Convection or forced air
Humidity	20 to 95%RH (Non condensing)
Altitude	9,000m (30,000 feet) max
Vibration	10 - 55Hz, 19.6m/s ² (2G), 3minutes period, 60minutes each along X, Y and Z axis
Impact	196.1m/s ² (20G), 11ms, once each along X, Y and Z
MECHANICAL	
Option: N3	Plastic converter cover Chassis mounting and with DIN clip mounting attachment Input/Output screw terminals with covers
Option: JN3	Plastic converter cover Chassis mounting and with DIN clip mounting attachment Input/Output Connector Type, requires VHR-5N and VHR-4N mating connectors
Remote ON/OFF	CN4 I/O Connector B2B-XH Manufacturer: JST Mating Connector XHP-2
Dimensions	111 x 52 x 27mm
Weight	160g

PBB6A Series

COSEL SINGLE/DUAL DC/DC CONVERTER

SELECTION TABLE

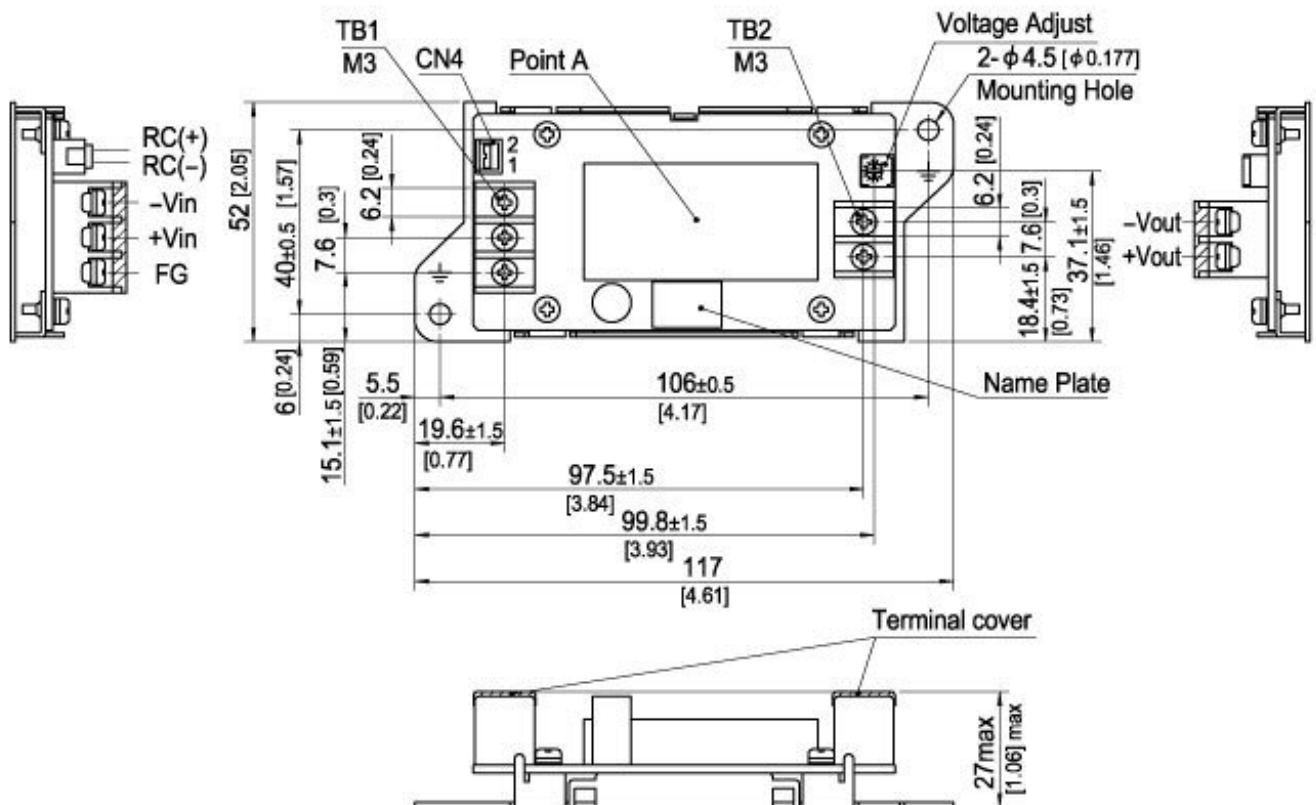
MODEL NUMBER	INPUT VOLTAGE	OUTPUT VOLTAGE	OUTPUT CURRENT	POWER
PBB6A-2405H-N3	9 - 36V	5V	6A	30W
PBB6A-2412H-N3	9 - 36V	12V	2.5A	30W
PBB6A-2415H-N3	9 - 36V	15V	2A	30W
PBB6A-4805H-N3	18 - 76V	5V	6A	30W
PBB6A-4812H-N3	18 - 76V	12V	2.5A	30W
PBB6A-4815H-N3	18 - 76V	15V	2A	30W

MODEL NUMBER	INPUT VOLTAGE	OUTPUT VOLTAGE	OUTPUT VOLTAGE	OUTPUT CURRENT	POWER
PBB6A-24D05H-N3	9 - 36V	+/-5V	10V	2A	20W
PBB6A-24D12H-N3	9 - 36V	+/-12V	24V	1.25A	30W
PBB6A-24D15H-N3	9 - 36V	+/-15V	30V	1A	30W
PBB6A-48D05H-N3	18 - 76V	+/-5V	10V	2A	20W
PBB6A-48D12H-N3	18 - 76V	+/-12V	24V	1.25A	30W
PBB6A-48D15H-N3	18 - 76V	+/-15V	30V	1A	30W

TECHNICAL ILLUSTRATIONS

Standard type

* External view of type options, please refer to the page STMG-11.

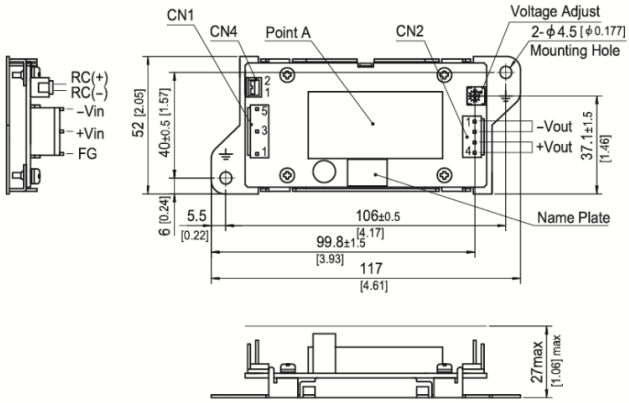


PBB6A Series

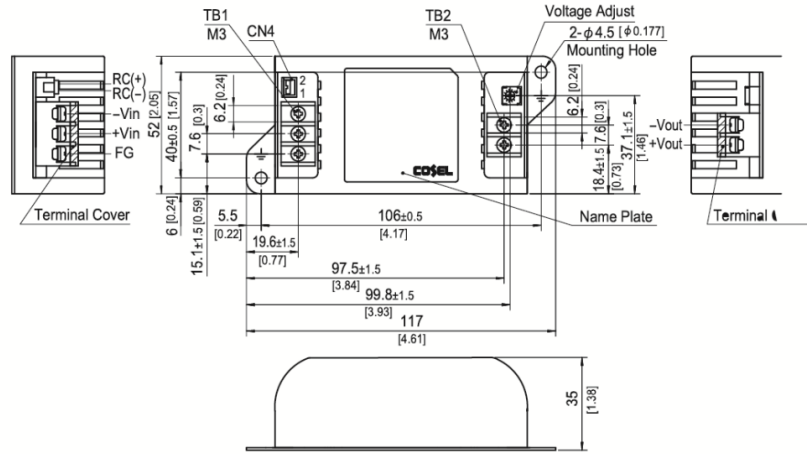
COSEL SINGLE/DUAL DC/DC CONVERTER

TECHNICAL ILLUSTRATIONS

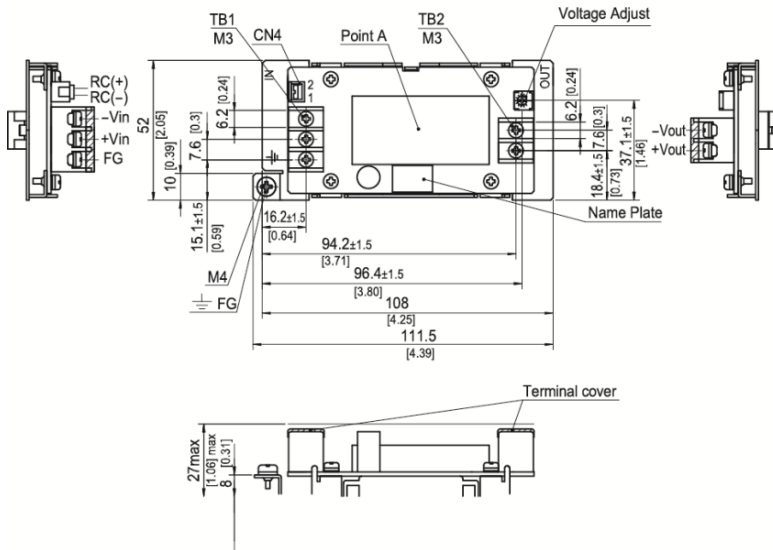
Connector type



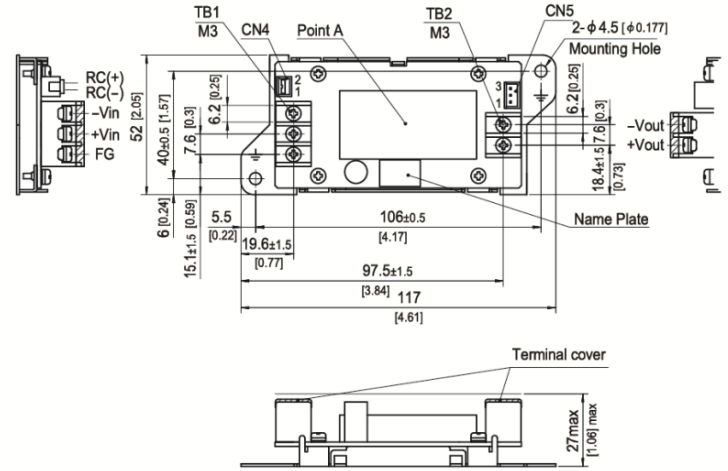
Case cover type



DIN rail installation type



External voltage variable volume type




Authorised, valued-added distributor


Australia & New Zealand



Powerbox Australia Pty Ltd

Sydney Head Office
4 Beaumont Road,
Mt Kuring-Gai, NSW 2080
Australia


 1800 251 380

 sales@powerbox.com.au

 powerbox.com.au

Powerbox Pacific Ltd

New Zealand Sales Office
1a Henry Rose Place,
Albany, Auckland
New Zealand 0632

 09 4158 320

 sales@powerbox.co.nz

 powerbox.co.nz