



WE MAGNETISE THE WORLD

*green  
signed*<sup>®</sup>  
by KENDRION



## The New Rotary Solenoid CDR by Kendrion

Optimize your System – Rotation Instead of Linear Movement



INDUSTRIAL MAGNETIC SYSTEMS

BINDER

## The New Rotary Solenoid by Kendrion

*The CDR combines high compactness and short switching times with intelligent solenoid design.*

Due to its compact design the CDR is the ideal solution for a variety of applications. A highly reliable transmission of the rotary movement to the shaft is guaranteed not least by the sensors responsible for the functional control.

The rotary solenoid excels by a potential switching time of 10 to 30 milliseconds and a rotation angle up to 90°. Size, functions and technical parameters can be customized to your individual requirements.

### Energetically optimized for future-oriented applications

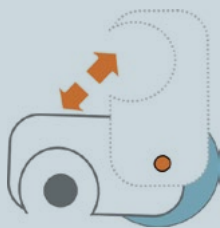
Moreover, due to the bistable design of the solenoid you save up to 80% of energy.

As opposed to conventional rotary solenoids the CDR only requires current for switching and is held currentless in rest position.

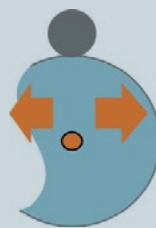


Due to its particularly environmentally-friendly design the solenoid has joined our Kendrion „green signed“ series.

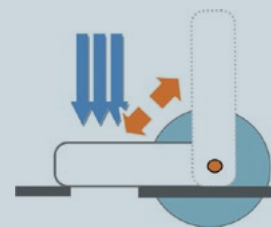
### Turning Lock



### Eccentric (clamping)



### Flap / Cover (gar/air/light)



### The advantages of the CDR at a glance

- Simple design, thus very cost-efficient
- Rotation angle of up to 90° possible
- High energy efficiency (current only during switching time)
- Low wear because of ball bearing
- Hall sensors can be integrated for low extra charge
- Modular design, easy to customize

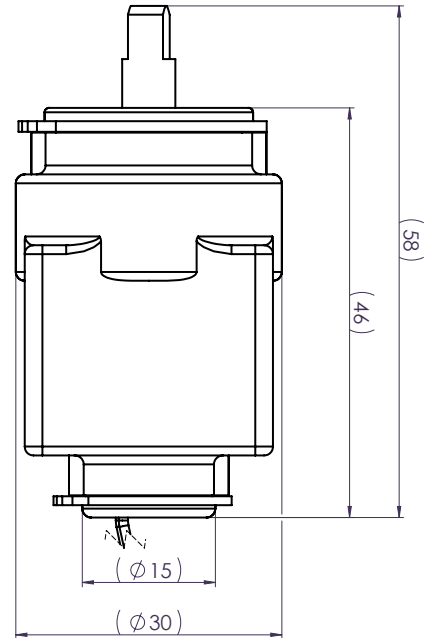
### The ideal choice for your application

There is a variety of applications in which the use of a rotary solenoid (instead of a linear actuator) facilitates the application.

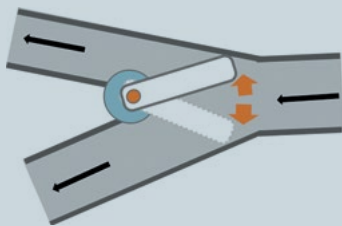
- Fewer components
- End position detection
- Increased process reliability

## Technical data of the preferred option CDR 030:

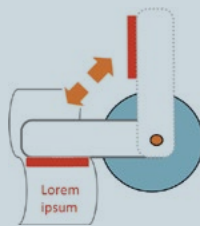
Rotation angle	90°
Supply voltage	24 V DC
Model	Bistable (change of position by pole reversal) Free strands
Duty cycle	15%
Power	30 W
Torque (power ON)	1.2 (start) - 3.5 (max.) Ncm
Detent torque (power OFF)	3.2 Ncm
Protection class	IP30
Environmental temperature	-10 bis +40°C
Hall sensor (optional)	Minus switching, 5-30 V DC, max 30 mA



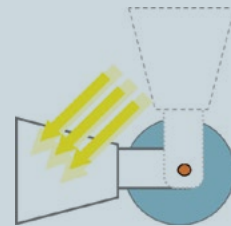
### Switch system



### Pad printing



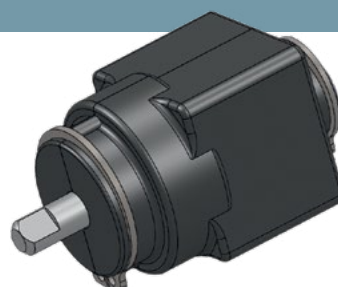
### Cover system



## Customization Options

- Hall sensor one- or double-sided
- Damped stop can be integrated
- Mono- und bistable designs possible
- Different voltages possible
- Duty cycle of up 100% possible
- Higher protection class feasible
- Rotation angle between 20 and 150° feasible

*Due to its modular design we can adapt the CDR fast and ideally to your requirements.*




***Authorised, valued-added distributor***


Australia & New Zealand



**Powerbox Australia Pty Ltd**

Sydney Head Office  
4 Beaumont Road,  
Mt Kuring-Gai, NSW 2080  
Australia


 1800 251 380

 [sales@powerbox.com.au](mailto:sales@powerbox.com.au)

 [powerbox.com.au](http://powerbox.com.au)

**Powerbox Pacific Ltd**

New Zealand Sales Office  
1a Henry Rose Place,  
Albany, Auckland  
New Zealand 0632

 09 4158 320

 [sales@powerbox.co.nz](mailto:sales@powerbox.co.nz)

 [powerbox.co.nz](http://powerbox.co.nz)